



Performance in motion



Rail Handler

A new concept in rail renewal,
transposition and repair



The Rail Handler is an innovative new concept in rail renewal, transposition and repair.

This powerful and versatile machine offers a variety of applications and benefits for rail maintenance teams, including lifting and carrying repair rails and threading long welding rails.

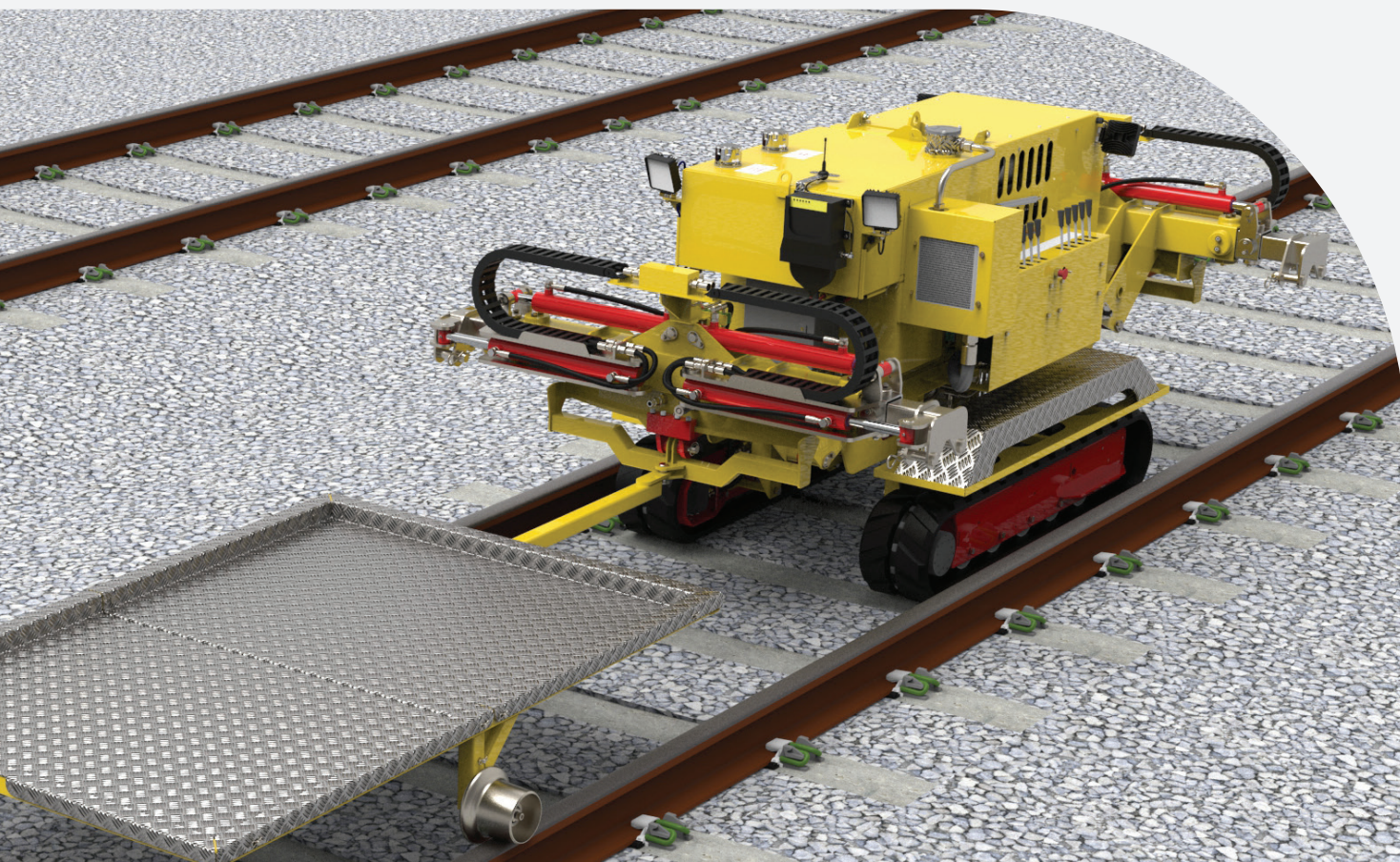
The multi-purpose Rail Handler provides the capability to install, remove, transpose or replace rails quickly and safely, even under live overhead catenary power lines. The machines also provide power for a range of hydraulic tools, and increase the speed and efficiency of re-padding and clearing ballast from DC third rail areas, clips and fastenings.

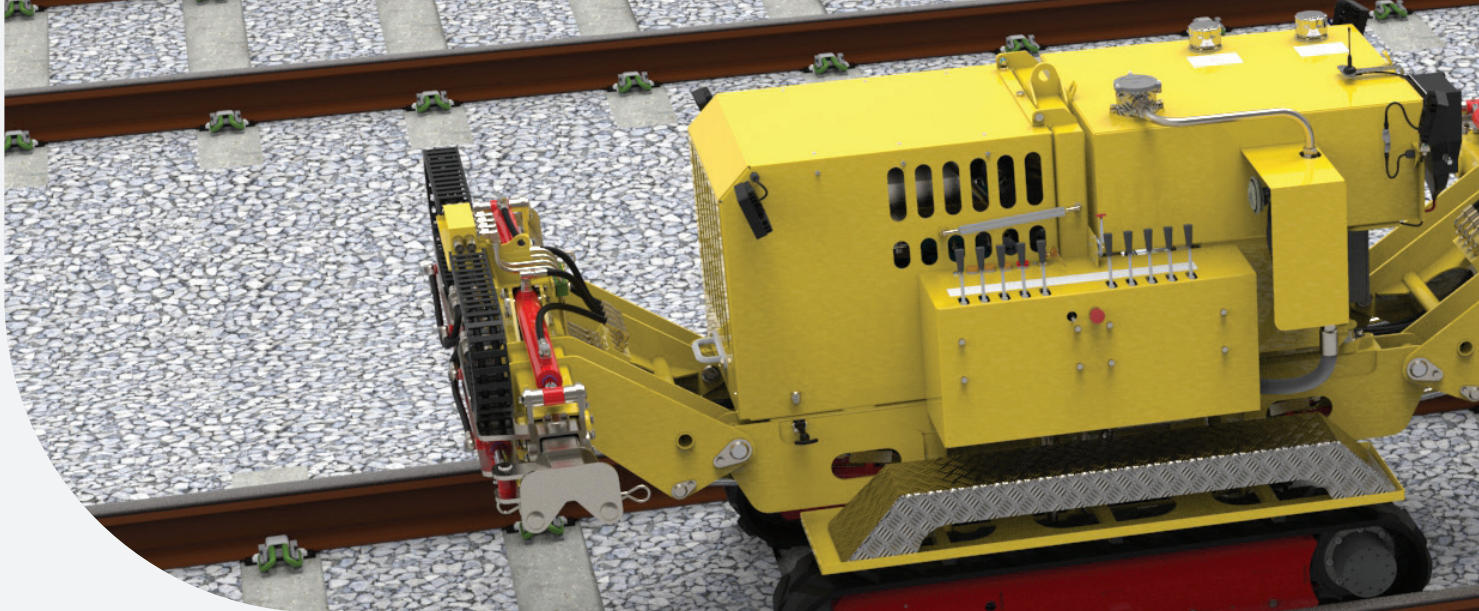
Capabilities

- Lift and carry closure and repair rails up to 10m
- Handle LWR of any length for new installations
- Act as a power pack for hydraulic power tools
- Transpose and thread rails from track to track
- Lift rails for installation and removal of rollers during rail stressing
- Specialised attachments for clip clearing, pad changing and ballast removal
- Install rails in track renewal operations - ballasted and slab track

Benefits

- High output rail installation
- Handles rails easily in single line situations
- Ability to handle 1 or 2 rails at the same time
- Radio control increases safety for operator
- No risk of damage to clips or fasteners
- Multiple applications for quickest return on investment

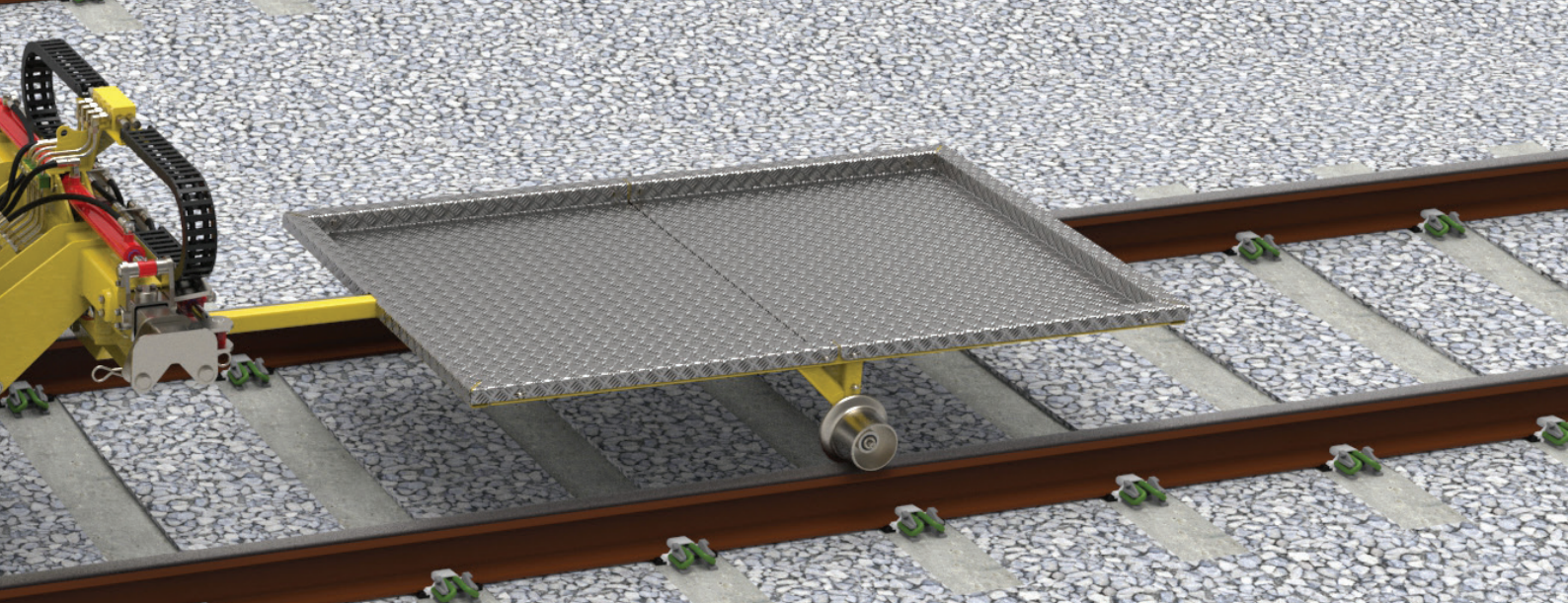




Key Features

- Easy to transport as a result of the compact and light-weight design.
- A large capacity fuel tank provides more than 12 hours running time at full power and up to 18 hours in normal use.
- Each machine has a hydraulically powered lifting arm with three tool attachment points.
- The attachment points can be independently, hydraulically extended by 500 mm (19.5 in) to reach rails placed on the sleeper ends or to flex rails into position when threading.
- The central lifting point provides a towing connection for trailed attachments.
- As standard, the machine comes equipped with four manually operated rail threaders and two manually operated rail grabs.
- Hydraulically controlled rail grabs and threaders are available as optional upgrades.
- Rubber tracks allow the machine to be used in paved areas and on access roads without risk of damage to the road surface.
- The strong undercarriage incorporates two- speed track motors for high speed or traction.
- When using tools fitted to the outer attachment points, the telescopic arms allow adjustment of the tool positions from a minimum of 1,480 mm (58.25 in) to a maximum of 2,408 mm (97.5 in) between centres.
- The telescopic arms use threaders fitted to the outer attachment points when removing and installing long welded rails, providing stability and control whilst working at walking pace.
- All functions of the machine are controlled by a portable digital radio remote control system, allowing the operator to drive the machine whilst remaining at a safe distance.





Technical Specifications

Tare Weight	1,750 kg / 3,850 lb
Working Load Limit	1,750 kg / 3,850 lb
Power	14.5 kW / 19 hp
Fuel (Std)	Diesel
Fuel Capacity	57 Litre / 15 Gal (US)
Attachment Point Height Above Ground (minimum)	351 mm / 13.8 in
Attachment Point Height Above Ground (maximum)	940 mm / 37 in
Maximum Travel Speed	4.8 km/hr / 3 mph

Operational Equipment

Hydraulic power to tool attachment points

Work lights

Electric emergency recovery pump

Ballast plough for 3rd rail clearance

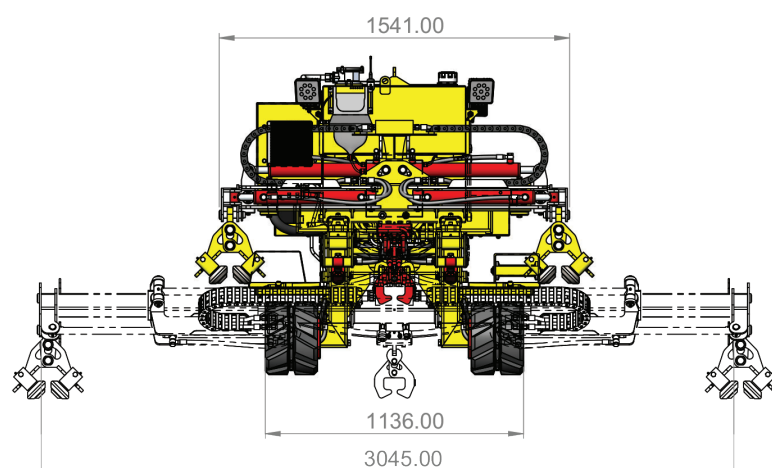
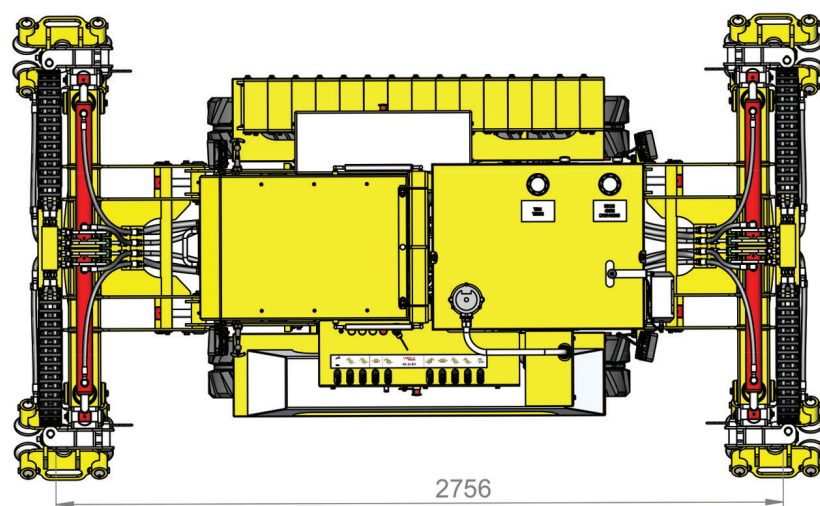
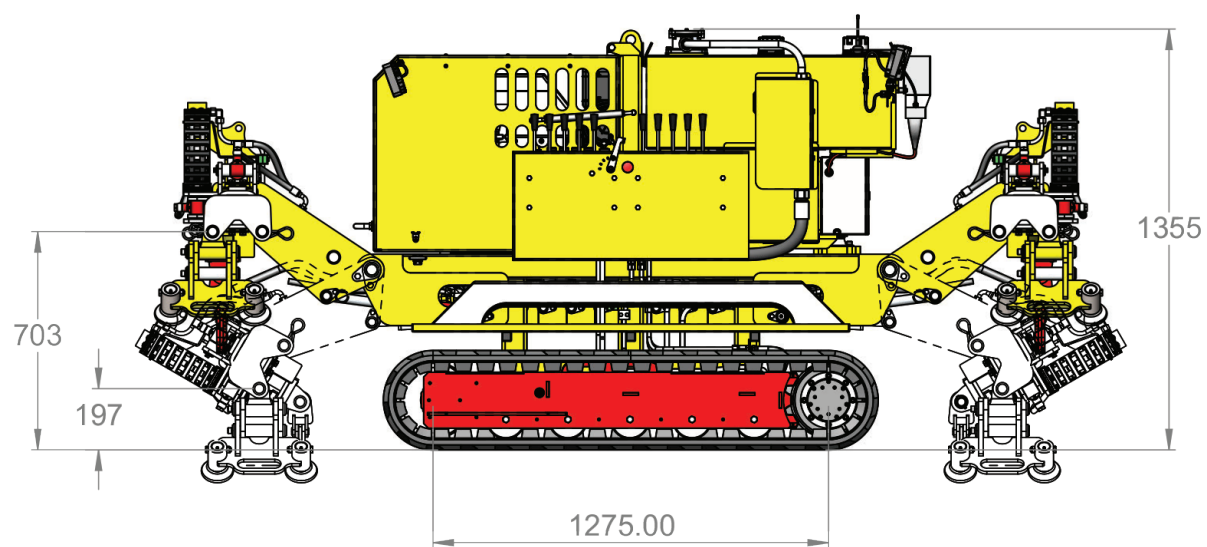
Clip Brush

Fastclip attachment

Re-Padding Cart

Multi-purpose flat / cable Trailer





Contact us today to learn
how we can help your
business improve reliability,
efficiency and safety in
railway operations.



Click or scan
to contact us