



Performance in motion

## Raven Rail Mover

Designed to maximise safety  
and minimise risk





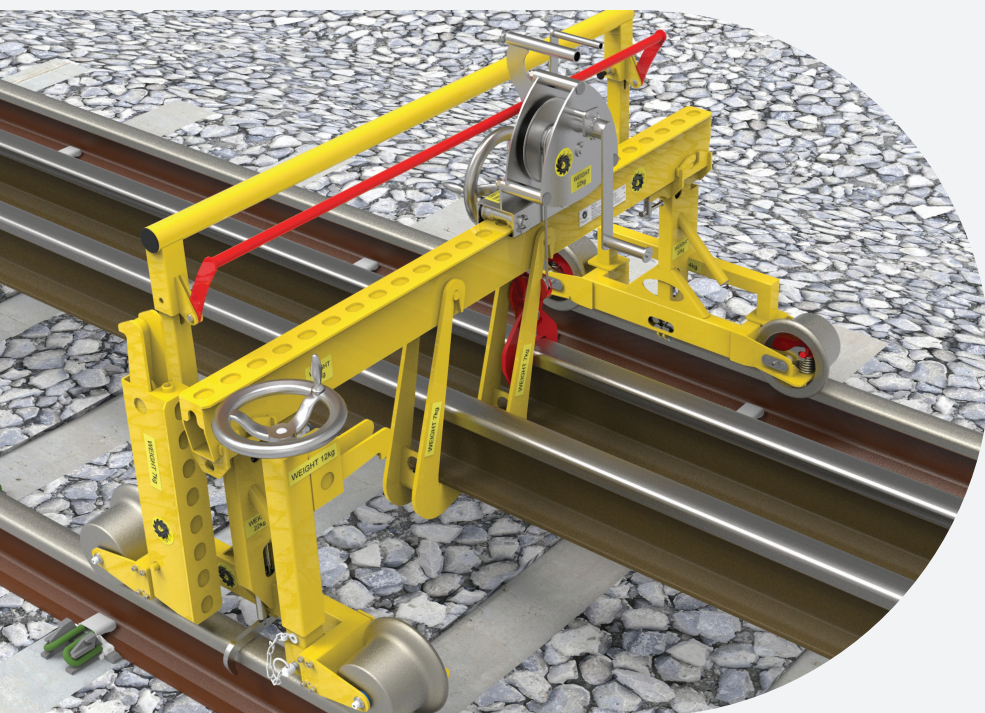
# The Raven Rail Mover has been designed for lifting, carrying and installation of running and conductor rails during rail track maintenance operations

Designed to maximise safety and minimise risk, this performance improving, hand-portable solution is ideal for use on sites with limited access including narrow paths and steps.

The rail borne trolley runs on profiled, flanged steel wheels which provide low friction, therefore minimising the force required to propel it. All handles and controls have been specifically designed to minimise the effort required for operation.

Fail safe brakes act on every wheel to slow and hold the Raven Rail Mover on gradients up to 1:25 and the units can also work on track canted up to 180mm.

Units are deployed in pairs as standard to carry rail sections up to 20m long. Multiple units can be used to carry longer rail lengths.



## Features and Benefits

- Fewer and lighter parts
- Easy to assemble and dismantle
- 4-Wheel Braking
- Full Width Push Bar & Brake Release
- Carry Handles
- Reaches to Sleeper Ends
- No need to De-Rail



Click or scan  
to contact us

[unipart.com](https://www.unipart.com)

Copyright© Unipart Mar 25